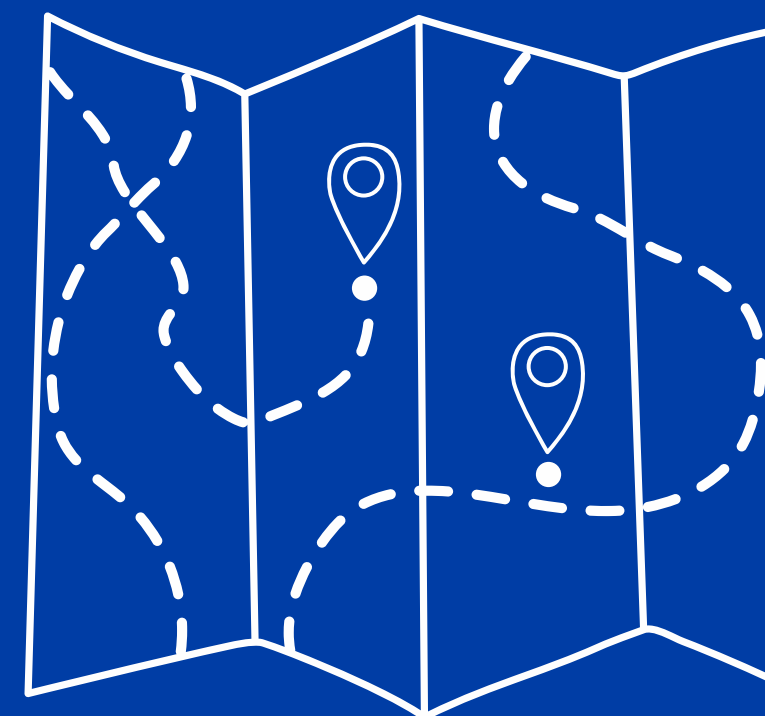


# DONOSTIA,



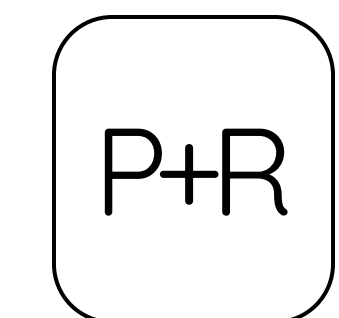
udako mugikortasuna  
la movilidad del verano



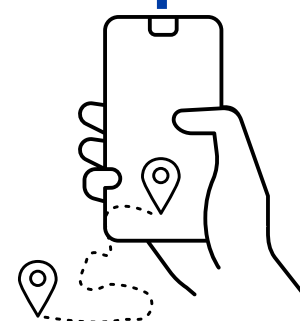


# MUGIKORTASUNA KUDEATZEKO NEURRIAK

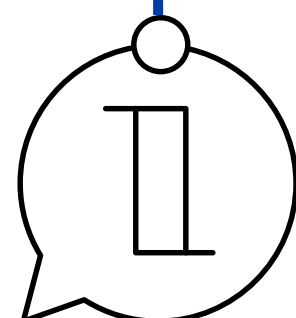
## MEDIDAS PARA GESTIONAR LA MOVILIDAD



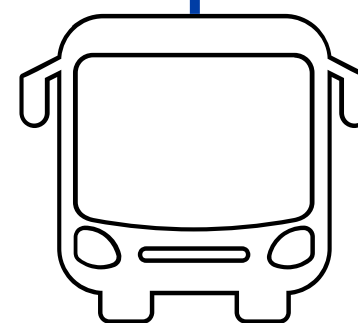
PARK+RIDE



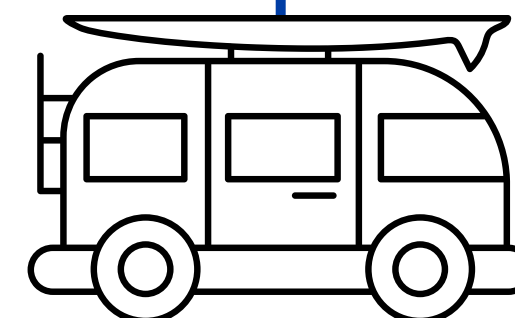
UNEAN UNEKO  
INFORMAZIOA



KOMUNIKAZIO  
KANPAINAK



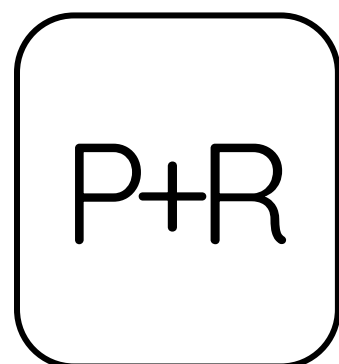
GARRAIO PUBLIKOA  
ETA AKTIBOA



AUTOKARABANA  
PARKINGAK



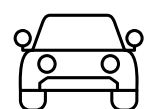
TRAFIKO  
KUDEAKETA

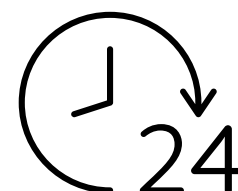


**PARK+RIDE**



**UNIBERTSITATEAK**

**200** 



**ILLUNBE**

**494** 



**IGARA**

**220** 



**ZUATZU**

**650** 



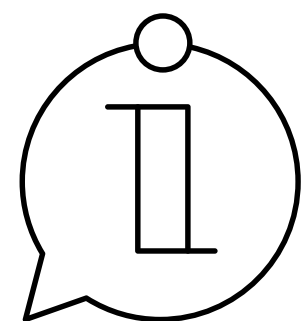
**FICOBA**

**900** 



**MIRAMON**

**1.700** 



# UNEAN UNEKO INFORMAZIOA

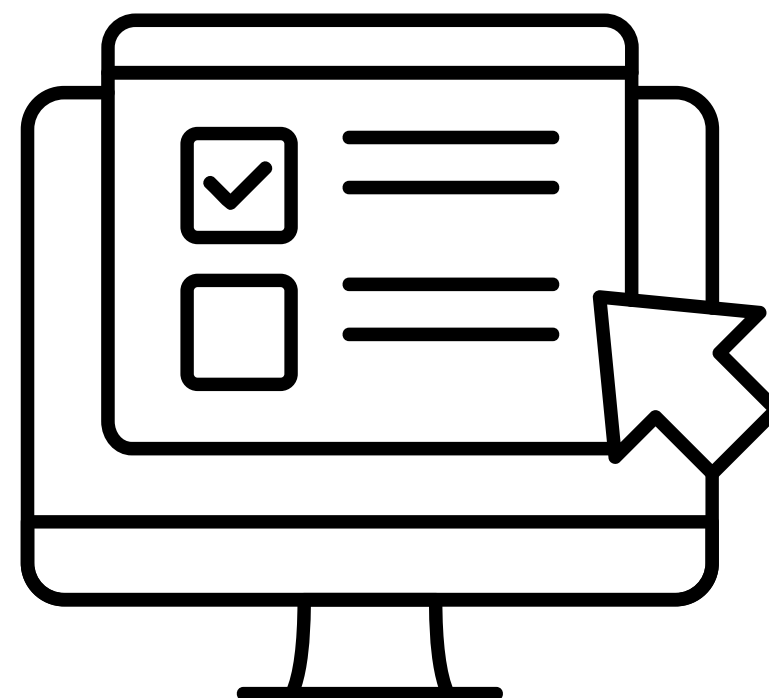
## INFORMACION A TIEMPO REAL



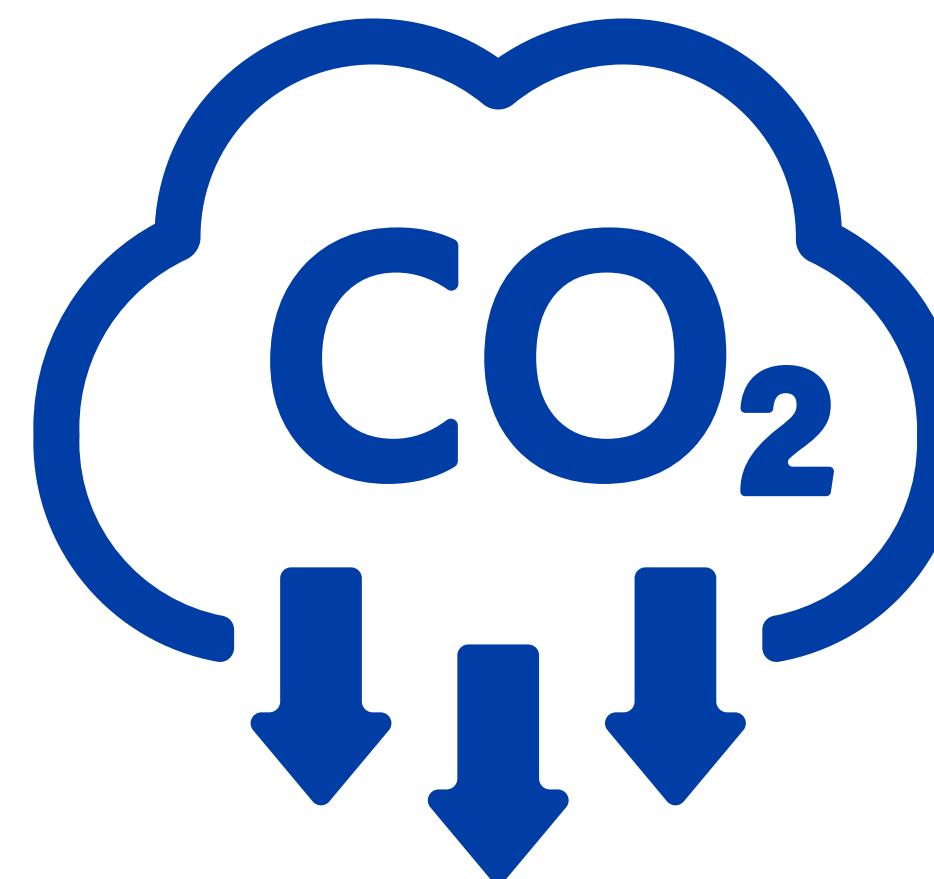


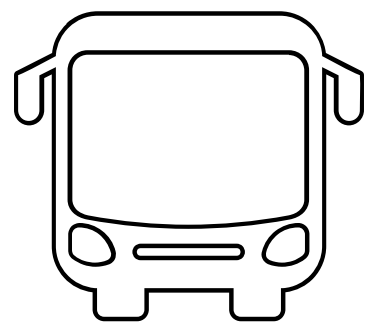
# ISURI GUTXIKO EREMUA

## ZONA DE BAJAS EMISIONES



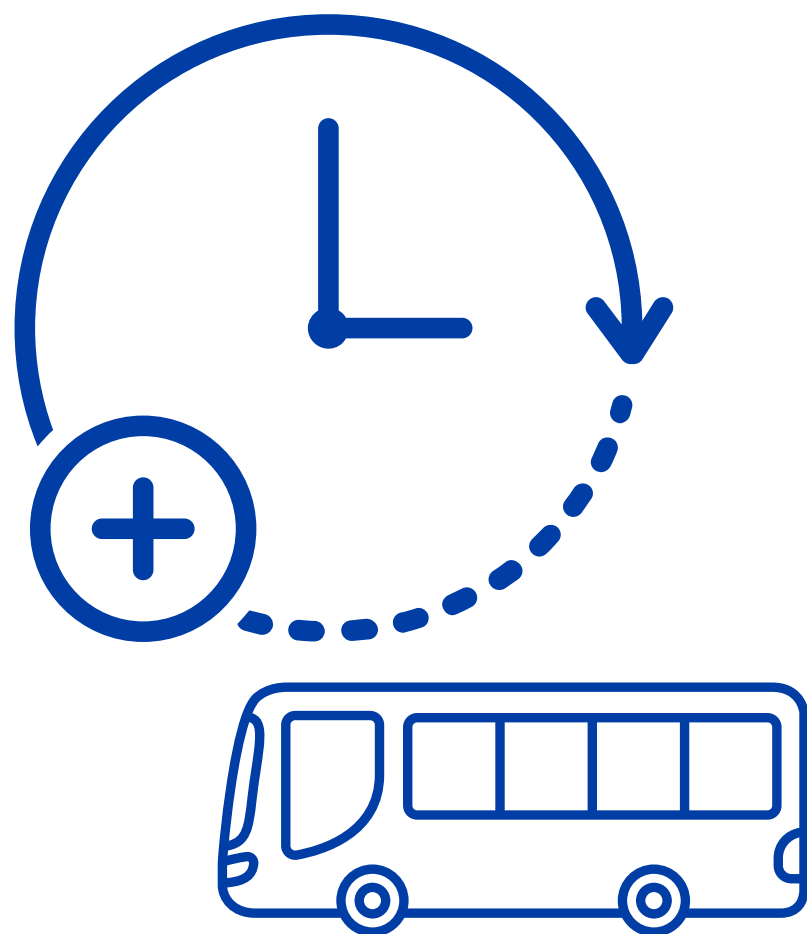
[www.donostia.eus/zbe](http://www.donostia.eus/zbe)



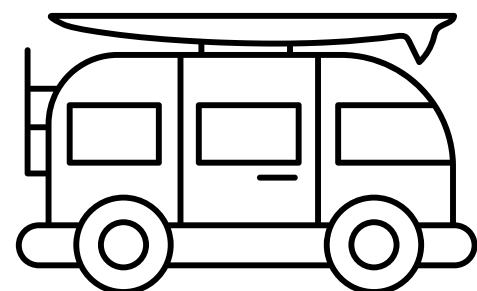


# GARRAIO PUBLIKOA ETA AKTIBOA

## TRANSPORTE PÚBLICO Y ACTIVO



**8.400**



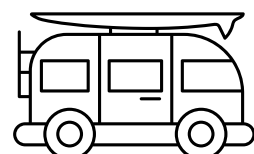
# AUTOKARABANAK AUTOCARAVANAS



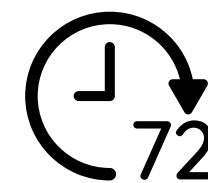
**BERIO**



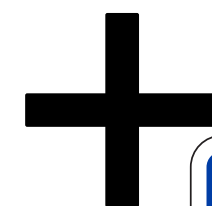
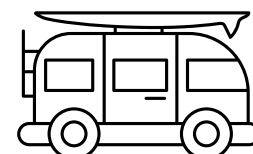
**44**



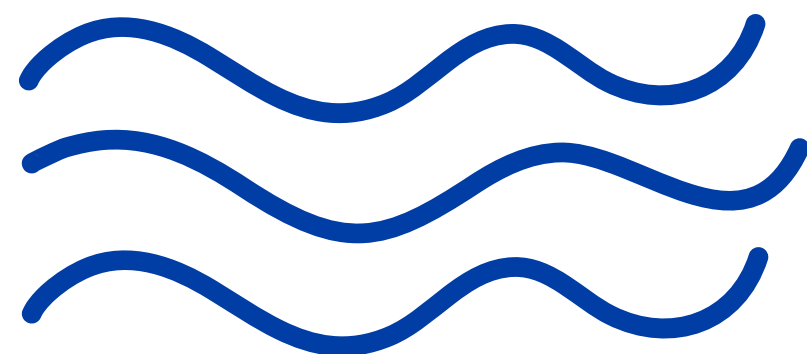
**ILLUNBE**



**45**



**IGARA  
IGELDO**



# GOMENDIOAK

## RECOMENDACIONES

MUGIKORTASUN AKTIBOA LEHENESTEA

GARRAIO PUBLIKOA ERABILTZEA

HIRIAN SARTU AURRETIK IBILBIDEAK PLANIFIKATZEA

ISURI GUTXIKO EREMUA KONTSULTATU

TRAFIKOAREN EGOERA KONTSULTATU

PARK AND RIDE APARKALEKUAK ERABILTZEA

PRIORIZAR LA MOVILIDAD ACTIVA

UTILIZAR EL TRANSPORTE PÚBLICO

PLANIFICAR RUTAS ANTES DE LLEGAR A LA CIUDAD

CONSULTAR LA ZONA DE BAJAS EMISIONES

CONSULTAR EL ESTADO DEL TRÁFICO

HACER USO DE LOS PARK AND RIDE

